



design | 3D | material lists

2024

SOFTPLAN
ARCHITECTURAL DESIGN SOFTWARE

SoftPlan 2024 Major Features

3D Path Tracing:

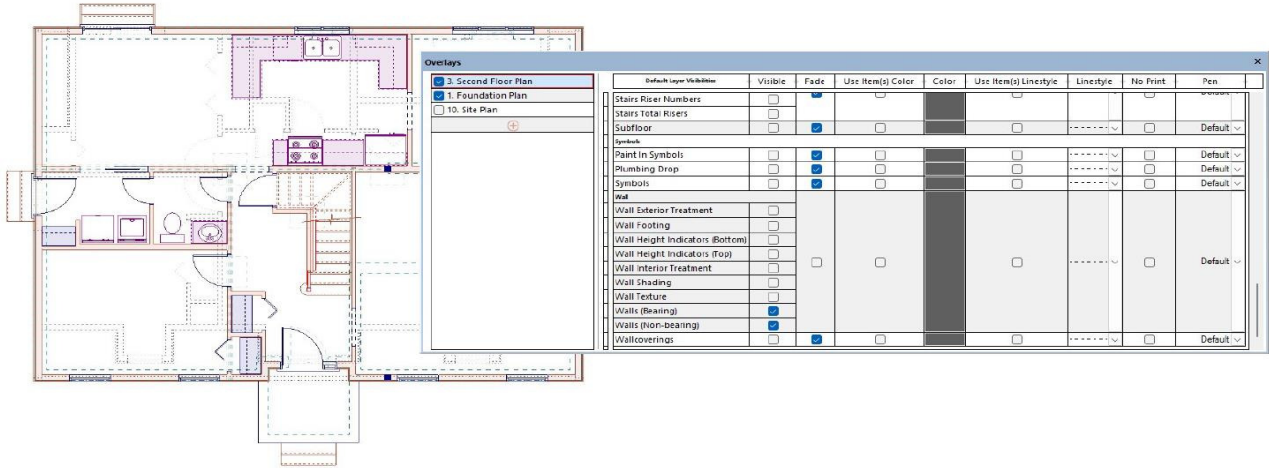


Taking a massive leap from the 3D output of past versions, this release boosts SoftPlan's 3D rendering power to unprecedented levels. By increasing the maximum path tracing from 1,000 to 20,000 passes, SoftPlan can now create drastically improved 3D images. Additionally, this version handles transparent surfaces and semi-opaque textures more accurately, reducing artifacts in the image to achieve absolute clarity and detail. Combining these changes with the greatly advanced rendering of backgrounds allows SoftPlan 2024 to produce significantly more realistic 3D images and animations.

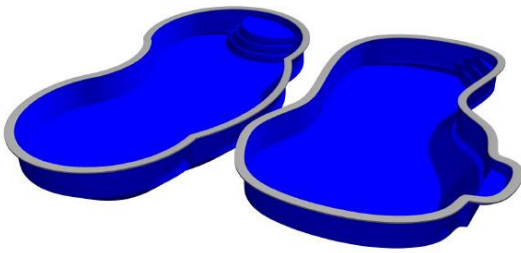


Overlay:

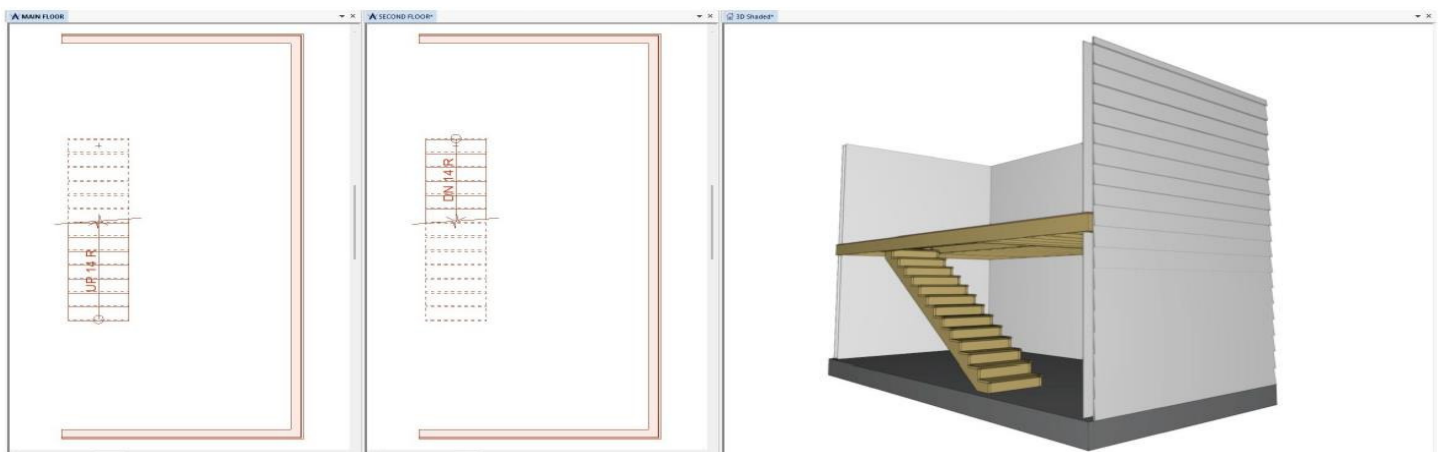
One of the biggest changes in this release is SoftPlan's new Overlay functionality. The Overlay command makes it easy to add overlays of other floors to the current drawing and specify the items that are visible on each floor. This tool streamlines the drawing process by providing a visual guide of the walls, floor system components, and other items that must be considered when designing the floors of a house. With the overlays in place, you then have the option to create an overlay viewport that can be cropped to only display the items from other floors you want to be visible on the drawing.



Pool:



Adding to SoftPlan's array of site creation tools, this release introduces a set of special commands that make it much easier to draw and customize swimming pools. Using simple drawing techniques, a pool can be quickly added that will automatically cut the ground and other site polygons. Once drawn, the pool can then be edited to specify its depth, water line, appearance, coping, and more. Next, pool transitions, benches, and steps can be added to provide the pool with a more realistic appearance in 3D.



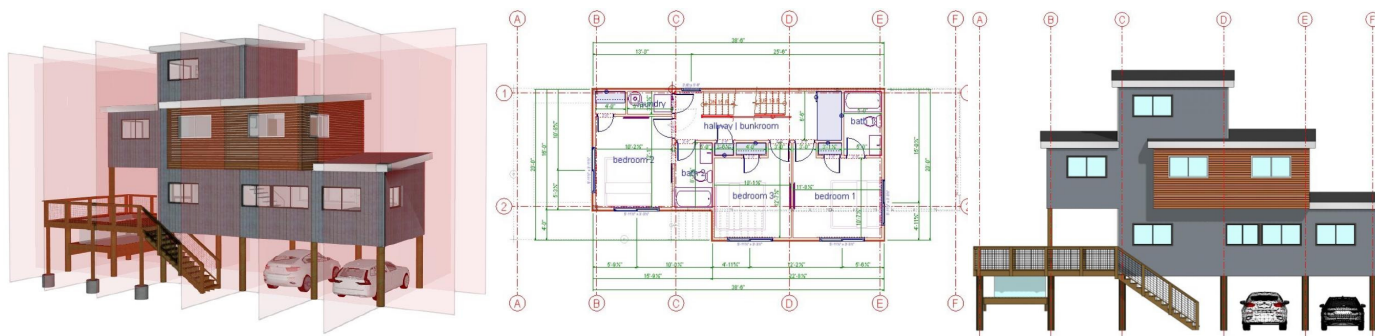
A Single Stair Displays on Multiple Floors:

A big overhaul to SoftPlan's stair behavior introduces the ability to display a single stair on multiple floor plans. This addition eliminates the need to add the same stair to two different drawings since a stair can now be made visible on the floor above or below with a click of the mouse. This also means that the stair does not need to be modified to extract correctly in 3D views, elevations, and cross sections. Once the stair is visible on the selected floor, you can then Edit it and use a clipping tool to ensure the stair and its railings appear on that floor exactly as the design requires.

SoftPlan 2024 Major Features

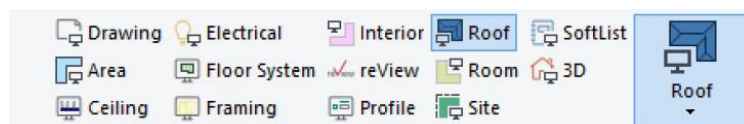
Structural Grid:

A new command in Framing mode allows the user to create a structural grid over the drawing by adding grid lines that SoftPlan automatically numbers and letters. Once added, these grid lines appear as structural grid line details on annotated elevations, sections and as extracted planes in the 3D model.



Quick Mode Change:

Adding to SoftPlan's many organization tools, this release includes a way to prioritize the drawing modes you most commonly use. By allowing you to assign the modes to a custom quick-selection menu on the SoftPlan Ribbon Bar, this time-saving feature makes it easier to seamlessly switch between drawing modes while working.



Google Maps

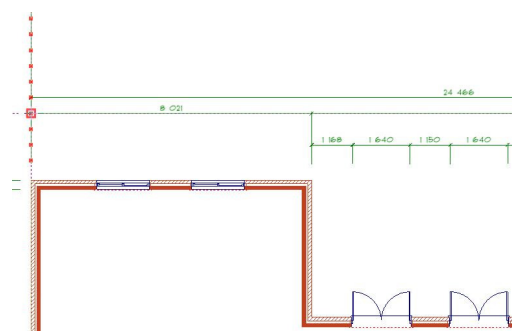
Satellite Image:

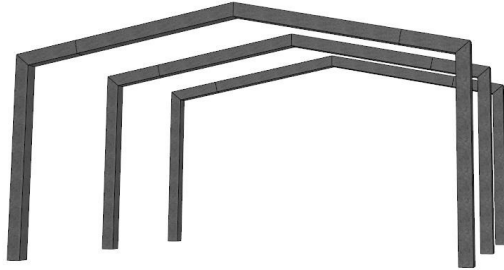
In addition to Google Maps site data, SoftPlan+ subscribers now have the ability to import Google Maps satellite images. With a few clicks of the mouse, SoftPlan automatically imports, scales, and rotates the satellite image to fit the size of the workspace. Once imported, the satellite image is added to its own Layer and can even be included on a Plan Set page for printing.



Cursor Snap on Extension Lines:

With the Cursor Snap function enabled, this version displays visible snap points on extension lines when drawing dimensions. Using the Dimension Spacing value set in the Dimension Options as a guide, SoftPlan projects evenly spaced snap points on the extension line which allows for quick and accurate placement of dimensions.



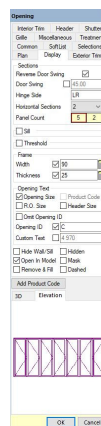
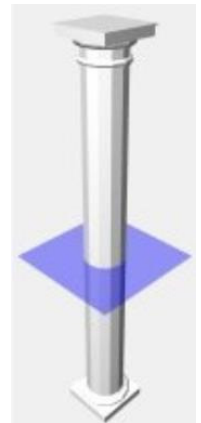
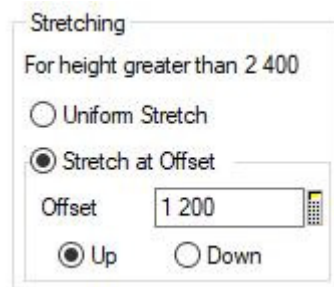


Rigid Frame:

New to SoftPlan 2024, the Rigid Frame command expands SoftPlan's extensive roof framing capabilities by providing a way to add rigid framing to industrial and agricultural-style buildings. Once drawn, the dimensions and other properties of the frame's rafters and columns can be quickly modified to accommodate the needs of the design.

Symbols/Post Stretch:

SoftPlan 2024 provides a much greater level of control while configuring symbols by adding a new option for specifying an offset distance to stretch items such as posts, spindles, fence board, and other symbols. By setting an offset cut plane on the post or symbol, you can decide how the item will scale when modifying its dimensions so that it appears correctly in 3D.



Exterior Bi-Folds Exterior Openings:

This release expands SoftPlan's vast collection of customizable opening types by adding exterior bifold doors. Using the Panel Count option, new exterior doors can be configured to have a specified number of folding panels. Likewise, the panels on existing folding doors can be modified to achieve the perfect look for the design.

Share Project with Company:

SoftPlan 2024 expands the sharing capabilities of SoftPlan+ by adding a new option for sharing a project with all key numbers within a company. With a single click of the mouse, a project can be shared company-wide without the need to specify each key number that is to receive the project.

SoftPlan 2024 Detailed Features

3D

- 3D texture follows the direction of a Brace
- Auto Match to Texture command is activated via a push button allowing Repeat Edit of the command
- Copy in 3D has the same options as the Copy command in 2D: Number of Copies, Distance, Equally Space Between, and Multiple Placement
- Door opening animation ability added to 3D walkthroughs
- Draw Select of an opening replicates the Trim and Grille settings of the source opening on the new opening
- Each 3D View and 3D Framing View file can have different Visible Floor settings
- Edit of the Display option for a material Repeat Edits
- Find in Material Tree command added to Edit Surface menu – opens the current selection in the Material Texture Edit menu
- Path Traced DirectX 12 renders greatly improved
- Room Names and Room Sizes automatically added to Annotated Presentation Views
- Sherwin-Williams colour swatches are the newest versions
- Transparencies improved when using DirectX 12
- Walking Height options added to control both 3D and VR (Virtual Reality) camera height when walking around

Area

- Auto Trace Area locates the edges of a Deck polygon
- Colour on Schedule matches colour on Area
- Drawing column added to Area Schedule
- Paint option added to Area polygons
- Total is now the sum of the rounded areas in the list
- When a Deck is drawn, a corresponding Area is automatically added to Area mode

Building Options

- All Building Options that an item is assigned to list on the right-click of the item
- Building Options that are currently enabled for a project display as bold in the Assign Building Options menu
- Custom Building Option Visibilities added to embedded Annotated views on Plan Set pages
- Footings will form correctly when two structural slabs on separate Building Options overlap and one of the Building Options containing one of the slabs is turned off
- Items on a Locked Building Option can no longer be modified via Repeat Edit
- Lock Invisible Building Options option added

Beams

- Adjust Height to Fit to Top of Beam option added to Posts
- Beam Labels list and round differently depending on the material composition of the beam. Dimensional lumber is listed nominally while engineered lumber and steel are listed with actual dimensions
- Beam Length display includes the Projection distance
- Beams on metric drawings use the Width x Depth / Depth x Width option when labelling beams
- Board Thickness options added to Beam Detail
- Default Value type control added to Beam Projection field
- Inner and outer edges of the Beam are located by Snap
- Face Mount option added to Beam Definition. Beams defined this way draw with no overhang
- LVL Beam, Glulam Beam, and I Beam thicknesses and depths have been updated to standard sizes
- Pressure Treated Beams added to defaults.
- Search command added to the Draw > Beam menu
- Section Thickness option added to Beam Definition

Cabinets

- Add Cabinet Fill command added to the right-click of a cabinet run
- Adjust available for Countertops in 2D and 3D
- Area Pricing option added allowing Doors and Drawers to be priced by the square metre
- Back Panel options added to control the appearance of the back of an island
- Cabinet ID column added to Cabinet Schedules
- Cabinet Face column entries drawn rendered rather than vectored (with lines)
- Customize Option added to the Position on Cabinet Legs
- End Panels on Desk Cabinets extend to the floor by default
- Face Pricing Method option added to Cabinet Schedules. Pricing can be set to Part (by the door) or Area (by the size of the door)
- Flat Panel faced cabinet hardware placement improved
- If the Replace Cabinet command is used on the last cabinet in a Cabinet Run (when placing a dishwasher, for example), an End Panel is automatically placed
- Preformed Countertop can default on
- Single Panel Shaker Cabinet Face Style added
- Spacing and Offset options added to Cabinet Shelves
- Vertical Dividers option added to Cabinet Shelves

Decks

- Add Parting Board To Deck Edge command added to right-click of Deck edge
- Auto Trace Area locates the edges of a Deck polygon
- Autorail added to right-click of a Deck Landing
- Deck Joist Type option added to Ring Joist
- Deck Ledger component added
- Deck Schedule added to Visible Items > Notes options
- Depth of Deck Ring Joist is independent of Deck Joist
- Patio added to Draw Deck menu
- Show Slope option added to Ramp
- When a Deck is drawn, a corresponding Area is automatically added to Area mode

Details

- Board Thickness options added to Beam Detail

Electrical

- Auto placement of outlets improved
- ESC key cancels drawing of an Arc Connection
- WP outlets added

Elevations & Sections

- Add Marker To Other Side command added to Edit of an existing Marker Line
- Block Move enabled for Opening ID, Product Code, and Opening Size notes on Annotated Elevations and Sections
- Default Colour Configuration option added to Elevation Marker Lines
- Cross Sections saved as a line drawings include insulation in floor joists
- Improvements made to the placement of Marker Line and Roof Pitch labels on complicated projects
- Improvements made to placement of Opening Sizes and Opening Hinges on Annotated Elevations
- Marker Line labels on Elevations and Sections can be formatted as Multi-Line Text
- Marker Lines automatically added to the top of a roof parapet
- Marker Line label text on Elevations and Sections is masked
- Orthographic Extension Lines can be pulled from angled wall corners
- Pen override option added to Section Line Marker
- Repeat Edit of Shutters enabled on Elevations and Sections

Erase

- Braces added to Type Erase
- Vegetation added to Type Erase

Extensions

- Single and Item Extensions can be pulled from Dynamic Cross Openings
- Align to Edge & Make Parallel allow selection via an item's Extension
- Extensions are automatically updated when the Projection on a Log Wall is changed
- Reference Points are extensionable items
- Snap points automatically displayed on Extensions at the location where the Auto Dimension command would place them

File

- Create Overlay Viewport command added
- Export SketchUp 2021 files added — SoftPlan+ only
- Import of AutoCAD DWG files with polygon shaped clipping planes added
- Import of a DWG/DXF into a SoftPlan project: AutoCAD paper spaces automatically create SoftPlan Plan Set pages by default
- Import DWG file includes No Print setting
- Import of DWG files containing elliptical arcs improved
- Imported images and PDF images can be set to Auto Update — when the external file is changed, the change automatically reflects in the SoftPlan Drawing
- Import SketchUp 2021 files added
- Include Overlays option added to DWG, DXF and PDF Export
- New Projects Upload to SoftPlan+ Cloud option added to System Options > SoftPlan+ Options
- File & Overlay completely revamped — additions include multiple overlays and granular visibility options by item and mode
- Projection Snap points are generated from the lines of an overlaid file
- Round Trip of files from SoftPlan to DWG to SoftPlan improved
- SoftPlan's No Print setting is included in DWG exports resulting in the creation of a no print layer in the AutoCAD DWG file
- SoftPlan Projects are located under the Windows Documents folder by default (This can be changed in System Options)
- Exclusivity option added for SoftPlan+ projects — exclusive projects cannot be copied by anyone they are shared with, and the ability to export or print the project is up to the discretion of the project owner

SoftPlan 2024 Detailed Features

Floor System

- Break Joists at Bearing Below option added
- Draw Grille changed from “expanding box style” draw action to a “symbol style” draw action — select an anchor point & orientation and a 300 x 100mm Grille is placed
- Fillet added to Floating Toolbar in Floor System mode
- Footings will form correctly when two structural slabs on separate Building Options overlap and one of the Building Options containing one of the slabs is turned off
- Lines on an overlaid drawing can be snapped to when drawing and adjusting items in Floor System Mode

Model

- Auto Basement command utilizes the new Show Stair on Floor Above command
- Auto Floor Above command added
- Improvements made to Auto Basement when multiple Garage Doors are present

Move

- Align to Edge & Make Parallel allow selection via an item's Extension
- Align to Edge can use lines from walls on overlaid drawings as the target location
- Centre In Room works when the room's walls are different thicknesses
- Copy in 3D has the same options as the Copy command in 2D: Number of Copies, Distance, Equally Space Between, and Multiple Placement
- If two dimensions are identically located in two different modes and one is moved, the other no longer moves
- Items can be moved by selecting their Extension
- Items will remain on grid when using Block Move while zoomed out on a drawing
- Modify added to the right-click of an item
- Only building objects are considered when reversing a drawing. Items such as notes & dimensions are ignored so that walls on a reversed floor plan are in the same location
- Polygon edges with deflections can be adjusted
- Selection Sets can be relocated using the Align to Edge command

Nest

- Add to Region command added to Repeat Edit on an item
- Auto Crop to Nested Region option added when placing a Drawing that contains a Nested Region into a Plan Set
- Open Source Drawing added to right-click
- Remove From Region command added to Repeat Edit on an item

Information Stamps

- @PG_GROUP Information Stamp added
- @Property_Area Information Stamp reads from the drawing stack rather than just the host drawing

Interiors

- Paint option added to Interior polygons
- Placement of Interiors on the butt-ends of Walls improved
- Wall Grille command added

Interior Elevations

- Pen override option added to Interior Elevation Marker
- Using the mouse wheel to Zoom is smoother

Layers

- Default Layer option added to Walls and Beam Definition
- Items on Locked Layers can no longer be modified via Repeat Edit
- Layer option added to Geo-Location Point
- New Group, Remove Layer, Add New Layer, and Reset to System options added to the right-click on the active layer window
- When pasting an entity into a drawing, if the item is on a Layer that is not visible on the drawing, a prompt appears asking to turn on the visibility of that Layer

Dimensions

- Bold option added to Dimension number
- Dimensions are only added to Banding on a Wall if the Shape Dimension option is selected
- Dimensions are not placed on Revision Clouds
- Identical dimensions cannot be placed directly on top of each other
- Mask All option added to Dimension Options.
- Snap points automatically displayed on Extensions at the location where the Auto Dimension command would place them

Ceilings

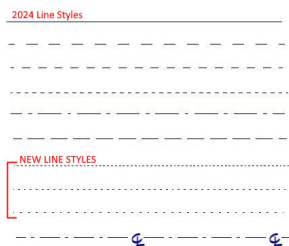
- Ceiling Ring Joists intersect with a butt joint rather than a mitre
- Clip to Ceiling option added to Roof Edge Edit
- Draw Grille changed from “expanding box style” draw action to a “symbol style” draw action — select an anchor point & orientation and a 300 x 100mm Grille is placed
- Ring Joist Type option added to Ceiling

Finishing Options

- Brace finishing option added
- Corner Board finishing option added
- Gutter finishing option added
- Fascia finishing option added
- Frieze Board finishing option added
- Shadow Board finishing option added
- Splash Board finishing option added
- Transition Board finishing option added

Miscellaneous

- Add/Remove Selection command added to the Tools menu
- Assign Drawing Modes on Menu option added to System Options
- Check for Updates command added to Help ribbon bar
- Draw Select command can select on one drawing and draw on a different drawing
- Distance field is automatically highlighted when copying an item
- Elliptical Arc command added
- Line Types: 3 new dashed line types added



- On Drawing vs. All option added to the Visible Items menu
- Projection Snap points are generated from a Reference Point
- System Options: Folder Locations menu options simplified
- Toggle Attach added to Keyboard Shortcut Configuration
- Toggle Group added to Keyboard Shortcut Configuration
- Toggle Link Floors added to Keyboard Shortcut Configuration
- Toggle Select Point added to Keyboard Shortcut Configuration
- Toggle Visible Only added to Keyboard Shortcut Configuration
- Toggle Shape Dimension added to Keyboard Shortcut Configuration
- Toggle Symbol Dimension added to Keyboard Shortcut Configuration
- Visible in All Modes option added to the Common tab for Shapes, Symbols, Beams, Extensions, and Dimensions

Notes

- Annotated Elevations and Sections can be included as source drawings for Revision Note Schedules
- Area Schedule Drawing column added
- Bold, Italics, and Underline ability added to Multi-Format Notes
- Cabinet ID column added to Cabinet Schedules
- Trailing zeros are suppressed on Cabinet Schedules
- Char Map command added to Note menu — allows for direct selection of specialty characters within a Font definition
- Centre In Room works when the room's walls are different thicknesses
- Current Drawing vs Drawings in Model option added to Room Finish Schedule
- Deck Schedule added to Visible Items > Notes options
- Double pointer command added — places a pointer off each end of a Note
- Font *SPHandSmallCaps* added

TYPICAL 90 X 35 WALL:
10MM GYPROC
TAPED AND SANDED

- Hardware column added to Opening Schedules
- If Auto Scale Notes is selected on a Plan Set, the first segment of a Segmented Pointer remains horizontal
- Opening Schedules: Glazing Area for specialty windows that contain a deflection is properly calculated
- Room Names and Room Sizes automatically added to Annotated Presentation Views

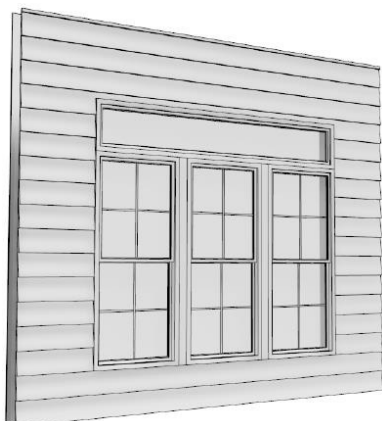


- Save as Default option added to Edit Schedule menu
- SPHAND font contains the ® (registered trademark) character
- Renumber Keynote IDs command removes keynotes from drawings that have been removed from the project folder

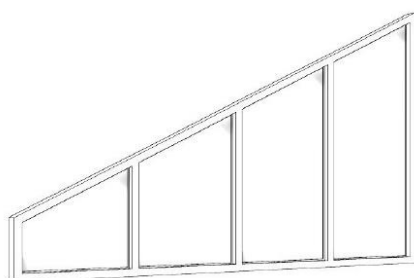
SoftPlan 2024 Detailed Features

Openings

- A single Transom is added over multiple single mullled openings



- Arch openings of different sizes are assigned different Opening IDs
- Block Move can be used to relocate an arrangement of Openings along a Wall
- Centre Opening improved for Openings in Walls defined with zero width materials
- Change Size command added to opening's right-click — replaces the current opening with the next wider, narrower, shorter, or taller Opening from the current Library
- Combined Unit With Doors type added to Items to Include for Opening Schedules
- Combined Unit Without Doors type added to Items to Include for Opening Schedules
- Custom Header Plate option added — allows a Plate to be placed directly Above or Below the Header
- Multiple Horizontal Sections option added to a single trapezoid Opening

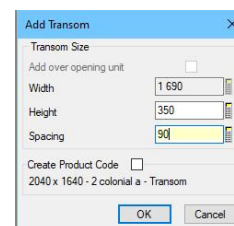


- Grille Style option added to round windows
- Door opening animation ability added to VR sessions
- Door opening animation ability added to 3D walkthroughs
- Draw Cross Opening Solid option added to Material Options > Opening Options
- In 3D, Draw Select of an Opening replicates the Trim and Grille settings of the source opening on the new opening
- Grille placement on Garage Door Elevations improved when the size of the glazing section varies widely
- Hardware column added to Opening Schedules

- Improvements made to placement of Opening Sizes and Opening Hinges on Annotated Elevations
- Mask option added to Dimension/Extension Options > Opening Options
- Opening Schedules: Glazing Area for specialty windows that contain a deflection is properly calculated
- Openings can be selected from one floor and drawn on another



- Pivot Swing option added to Door Components — allows for the creation of Pivot Doors
- Sorted column settings are applied as new openings are added to schedules



- Spacing Option added when placing a Transom above an Opening
- Two section Pocket Doors centre properly

Paint

- Paint (Hatch or Image) can be added to Area, Interior, Room Modes replacing the shading
- Placement of Image Paint is faster

Plan Sets

- Auto Crop to Nested Region option added when placing a Drawing that contains a Nested Region into a Plan Set
- Centre on Plan Set includes Cropped Views
- Close All added to right-click on Plan Set
- Colour options added to PDF Export
- Copy to SoftPlan Clipboard added to Plan Sets
- Cropped Polygon Views can be created around static model images, Annotated views, and presentation views
- Cropped Views include a buffer to account for line and pen thicknesses
- Custom Building Option Visibilities added to embedded Annotated views on Plan Set pages
- Landscape vs Portrait orientation option added to creation
- Open All added to right-click on Plan Set
- Plan Set Labels use the Overview Notes colour when Print Using Screen Colours is selected
- Plan Set Templates added to Backup and Restore
- Paste from SoftPlan Clipboard added to Plan Sets
- Repeat Edit added for Items directly on a Plan Set
- Repeat Edit added to default Floating Toolbar
- Reset Position command added to drawing and view labels
- Save as Template added to right-click on Plan Set
- Zoom Extent ignores Drawing Labels if visibility option is off
- Zoom World is removed from Plan Sets

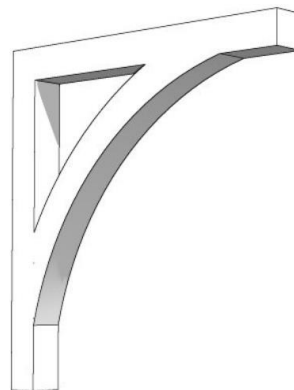
Print

- Arc Length added to Print of radiused Site Lines
- Colour options added: Pen Colour, Screen Colour, Pen Lines/Grayscale, Grayscale
- Draw Select command works on Paint Breaks
- Include Overlay column added to Batch Print menu
- Overlay option added to Print
- Plan Set Labels use the Overview Notes colour when Print Using Screen Colours is selected
- Room Mode prints in shaded rather than solid black



Posts

- Adjust Height to Fit to Top of Beam option added
- Adjust Height to Fit to... will look to the floor above to locate a beam
- Braces added to Type Erase
- Brace added to the items shaded when Show Polygon Shading is selected
- Bracket option added to Brace
- Deflection option added to Brace

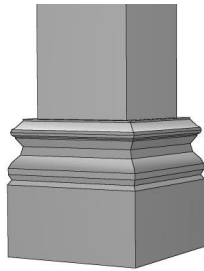


- Finds the Top or Bottom of Beam and adjusts the height of the Post. If there is no Beam, the Height will change to match the bottom of Ring Joist
- Post Skirting option added — places a profile around the base of a post
- Shaded option added to plan Posts
- Stretching option added to Post definition

SoftPlan 2024 Detailed Features

Railings

- Post Skirting option added — places a profile around the base of a post



- Railings are automatically adjusted when a deck or stair edge is adjusted and Attach is turned on
- Railing Overhang and Wall Returns display in plan view
- Roof Vent override options added to Roof Edge Edit menu
- Wrought Iron added to Railing Finish options

reView

- Overlay option added to PDF Export

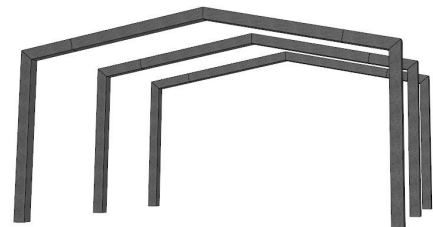
Roof

- Accent Trusses added to stacked or nested Dutch Gables

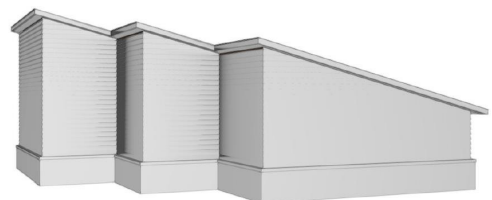


- Bird Box option added to Gable ends with raked Fascia
- Clip to Ceiling option added to Gable End Roof Edge edit
- Each Bird Box on a Gable Roof can have a different width
- Default Sub-Fascia option added
- Fascia option added to roof edge. Places a wood fascia onto the Sub-Fascia
- Formation of Ridges and Valleys on angled roofs and angled portions of roofs improved
- Frieze boards mitre when the Follow Bird Box option is turned on
- Frieze under the lower roof of a Multi-Floor Roof properly mitres
- Frieze forms properly on nested Dutch Gable style roofs
- Frieze forms properly on nested Gable style roofs

- Gable End material properly aligns with the wall material below when a Gable Vent is added
- Gutters are properly added to roofs that have Hip Returns on opposite Gables of the same roof
- Heel Height, Seat Cut, and Butt Cut are all editable on the roof poly level but only applied to the valid (hip) edges
- If a roof has both Hip and Gable edges, the Roof Edit menu will list separate Hip Overhang and Gable Overhang values. If the roof does not have any Gable Edges, only an Overhang value will list
- Remove Intersecting Material option added to Roof Edge Edit — removes the siding, brick, or stucco from the second floor that is buried behind a roof on the first floor
- Repeat Edit acts on Crickets and Roofs on Bays
- Ridge Cap placement improved
- Ridge Vent option added



- Rigid Frame command added — used for commercial and agricultural buildings
- Roof on Bay command improved when used on a Multiple Floor Roof
- Roof Framing sizes (Rafter Depth, Truss Chord sizes) are stored with the Roof, when a rafter or truss is added, it will use those sizes for the newly created framing member ignoring the drawing defaults allowing Seat Cut, Butt Cut and other values to be based on editable values so a house can have different rafter thicknesses on different roofs and the seat cut value is accurate
- Shadow Boards extend properly on Dutch Gable end style roofs



- Slope Entire Roof command added to Edit menu when in Roof mode
- Soffit placement on angled holes improved
- When the Roof sits low on a wall (Top of Plate to bottom of Fascia is less than 125mm), the formation of the Hip Returns is improved

SoftPlan 2024 Detailed Features

Roof Framing

- If the first or last truss in a Truss Set is located near a Gable End, it will automatically be set to a Gable End Truss
- Purlins improved on angled roof sections
- Rafter Hanger option added to Roof Framing members
- Sub-Fascia can be automatically added to a Truss Set
- The maximum size (length) of an Accent Truss increased
- Webbing is added to Jack Trusses with an energy heel

Site

- Adjust Size command in Site mode allows Distance input
- Arc Length added to Repeat Edit
- Arc Length added to Display and Print of radiused Site Lines
- Arc Radius added to Repeat Edit
- Create Site Border command added under Tools menu
- Default colour configuration added to Geo-location Point
- If a Site Object is made visible in Drawing mode, it can be edited in Drawing mode
- If the source shape for the Convert Shape to Site Line command is a polygon, the Site Line is created as a polygon
- Form Polygon command does not change the shapes when combining a spline with a regular orthographic shape



- Google Maps Satellite Image import added
- Latitude and Longitude data for Geo-location Points can be entered in decimal degrees in addition to degrees/minutes/seconds
- Layer option added to Geo-Location Point
- Location Options added to the default Site mode toolbar
- Modify Text option added to Edit of a Site Line
- Pool command added
- Project Options: North Options renamed to Location — includes Geo-location Point's Latitude and Longitude
- Site Plans no longer display Section Lines by default
- Site Work can be drawn as a spline
- When moving an image, the vectors are visible through the image making it easier to align items

SoftList

- Area Pricing option added allowing Cabinet Doors and Drawers to be priced by the square metre
- *beam_radius* variable added to Group Beam

- Constant *ladder_stud* added to list Ladder Studs separate from common studs.
- Edges Length column added to Takeoff Schedules in SoftList drawing mode
- Improvements made to combining very long Rafters on Cutlist Reports
- *glazing_area* variable added to Group Openings
- Variables *has_ridge_cap*, *has_ridge_vent* & *ridge_vent_length* added to Roof & Roof Plane components
- Variable *frieze_finish* added
- Variables *fascia_finish*, *gutter_finish*, *soffit_finish*, and *shadow_board_finish* added
- Variables *splash_board_finish*, *corner_board_finish*, *frieze_board_finish* added to Group: Wall / Part: Wall

Stairs

- The Direction Arrow is continuous and the Total Riser Count is placed mid-landing
- Default Landing Joist Depth option added to Stair Options
- Default Stringer Depth set to 240mm
- Left & Right options added to Nosing settings
- Nosing settings added to Edit of Landing Edge
- Right-click menu in 3D and Ceiling Mode includes Stair Headroom Clearance Hole command
- Show On Floor Above and Show On Floor Below commands added to the right-click of a Stair
- Stringer Width option added — allows for the creation of Mono or Floating Stairs
- Thickness option added to Treads

Symbols

- Symbols with Attributes have a "label" and a "default value"
- Stretching options added to Symbols

Wall Framing

- Custom Header Plate option added, allows a Plate to be placed directly Above or Below the Header
- Hurricane / Cyclone Straps added
- Garage Buck height calculations improved.
- Parapet Walls included in Wall Panel drawings
- Square Stud added to Form Corner Style, places a solid Stud at the corner
- Structural Grid command added
- Wall Plates are staggered in the 3D view to match the Wall Panel diagrams
- Exclude From Unit option added to Opening Header

SoftPlan 2024 Detailed Features

Walls

- Default Layer option added to Wall Definition menu
- Inset Frieze shortens the Wall Material by the Frieze Height
- Frieze forms properly at the corner of 2 different wall types
- Frieze improved when under one roof section but over another
- Frieze application to False Gable with Bird Boxes improved
- Frieze eliminated when a roof intersects a wall under a roof above

- Footing Projection override option added to Footing Edit
- Inset Corner Board option added to Wall Definitions
- Projection Snap includes non-visible wall materials
- Reverse Board & Batten siding profile added
- Search command added to the Draw > Wall menu
- Slope Step option added to Style setting on Wall bottoms —the bottom of the footing is sloped while the top steps
- Stud-LVL-Insulated material type added

Additional Local Content

Additional content has been added specifically to SoftPlan 2024 as supplied to Australia and New Zealand by Cadbuild.

Please see:

[Locally added items to SoftPlan2024](#)

Available on www.cadbuild.com.au

Walls

- Glass shower wall added
- Block wall with gyproc lining, 22mm battens and footing

Beams

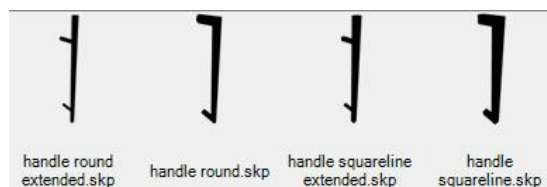
- Deck beams – 18 LVL Pressure Treated
- Beam - 18 LVL Pressure Treated

Openings

- 12 Pivot Entrance style doors
- 10 Pivot Shower doors
- 5 Thin framed glass doors added to Colonial library
- 5 Glass External Bifold doors
- 3 Glass Internal Bifold doors
- 4 2400mm high roller doors

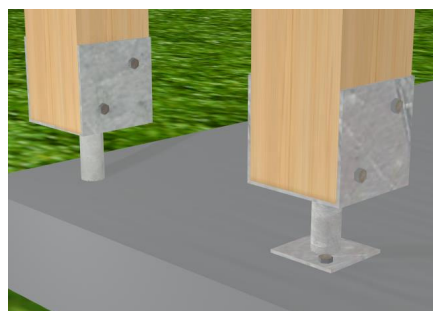
Door Hardware

- 4 Vertical door handles



Symbols

- 4 Mixer Taps - Bathroom library
- 4 Above vanity sinks – Bathroom library
- 4 Garden Taps – Landscape library
- EV Charging Panel – Mechanical library
- EV Charging Signs – Signs library
- Solar Storage Battery – Mechanical library
- Fire Extinguisher – Mechanical library
- Fire Blanket sign - Signs library
- Fire Blanket 3D symbol – Mechanical library
- Fire Blanket 2D symbol – Signs library
- 350 x 350 Hollow column – Exterior library
- Hollow column – Shapes library
- 2 Post Stirrups – Set in or bolted down style – Mechanical library



Post

- 90mm Post with offset for stirrups
- 90mm Post with zero offset

Banding

- Brick sill profile added to banding



Profiles

- Hardies Axon®, Oblique®, and Stira® added to Profiles > Cladding library

Textures

- Updated ColorBond textures for corrugate roofing
- Updated ColorBond textures for fencing
- Added Concrete stencils – Exterior finish library
- 4 Wagners CFT Decking textures – Manufactures library



Keyboard Shortcuts

- Ctrl + O = Overlay
- Shift + V = Visible Items
- V = Block Move
- Alt + A = Align to Edge
- 3D Shortcuts – O = Sun Options
- 3D Shortcuts – L = Lighting Options

Finishing Options

- To go with the new 2024 finishing options, textures have been set for: Fascia, Gutter, Soffit, Shadow Board and Transition Board – selected in roof options
- Textures have been set for Corner board, Frieze Board and Splash Board – selected in Material Dimensions > Trim Options

Line

- 3 dashed lines added to line styles
- Updated centre line character

Plan Set

- Cover Sheet title block updated with @property_area

SoftList

- Following items has been added or updated to the Summary, Detailed short and full format reports
- Decking beams – LVL Pressure Treated
- Deck Ledger Boards - Timber and Steel
- Decking Ring Joists - Timber and Steel
- Ceiling Ring Joists - Timber and Steel
- Top Hat 64 Wall members
- Grill - Floor
- Grill - Wall
- Grill - Ceiling
- Floor Joists – Timber and Steel
- Brace – Bracket
- Post Shirts – Round or Square
- Accent Truss
- Cyclone (Hurricane) Straps
- LVL Studs added to Stud formula
- Pool values, for excavation, area and coping
- Updated Site coverage and Site details to include pool values

SoftPlan+ cloud drive and services

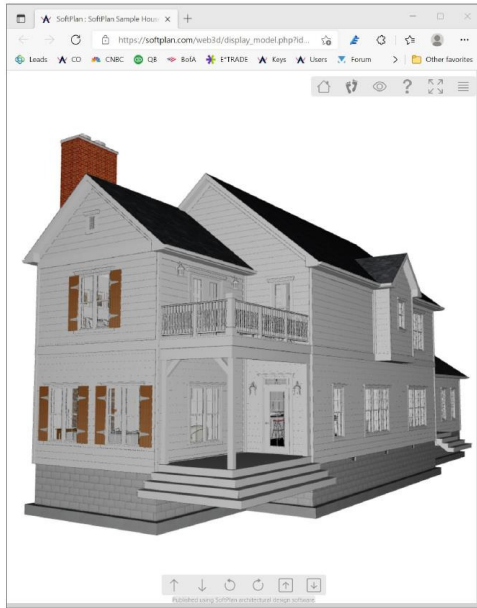
SoftPlan+ is a suite of tools that enrich the design process by providing users with the very best SoftPlan experience available.

Includes:

- Online Training Content
- reView - 2D & 3D designs on iPad, iPhone & Android
- PDF – Import and Export PDF files
- reView – import and export SoftPlan reView files
- panorama 3D for PC, iPad, iPhone or Android
- 360° photo interactive images that can be panned & explored
- Google - import 3D terrain and satellite images directly from Google
- Sketchup – import / export expands modelling options at your disposal
- Premium manufacture content with high quality 2D/ 3D symbols



SoftPlan+ cloud drive and services



SoftPlan+ web3d model viewer

Exclusive to SoftPlan subscribers and SoftPlan+ subscribers, this feature allows you to publish 3D models directly to the web to be viewed by anyone you wish.

Once published, SoftPlan creates a link to your web3d page which we host on our site. Anyone you share this link with can view and explore your project without needing to download and install any additional software.

SoftPlan web3d models can be viewed and navigated on PC, phone, or tablet.



Scan the QR code to take a tour of this historic renovation using SoftPlan's web3d technology on your computer, tablet, or phone.



SoftPlan+ **Upgrade** Pricing

This is to upgrade already owned copies of SoftPlan.

SoftPlan+ subscription:

\$125/month

SoftPlan+ is a subscription service.

SoftPlan+ is the only method to upgrade an existing SoftPlan to a newer version.

SoftPlan+ subscriptions are applied to copies of SoftPlan already owned and are not additional copies.

Subscriptions only available in Australia and New Zealand and must be paid by credit card.

Cadbuild Pty Ltd
285 Dairy Rd
The Oaks, NSW, 2570

SoftPlan Sales and Support
Australia and New Zealand

02 4657 1874
sales@cadbuild.com.au
www.cadbuild.com.au

SOFTPLAN
ARCHITECTURAL DESIGN SOFTWARE